

Toolmaster TM250-TCAM2

Tool Presetter with Image Processing

Extremely simple operation
Highest measuring reliability

Optimum machine up-time
No rejects



simple, rapid, accurate

Special offer

Free of charge package:

- 10.4" screen instead of 6.4"
- 20x magnification instead of 10x
- Front illumination
- Label printer DYMO 400
- Roll of labels (500 pcs.)
- Installation CD for data transfer to PC

pub
S W I S S

The Toolmaster 250 optimizes tool presetting through its ideal combination of functional performance, quality and price.

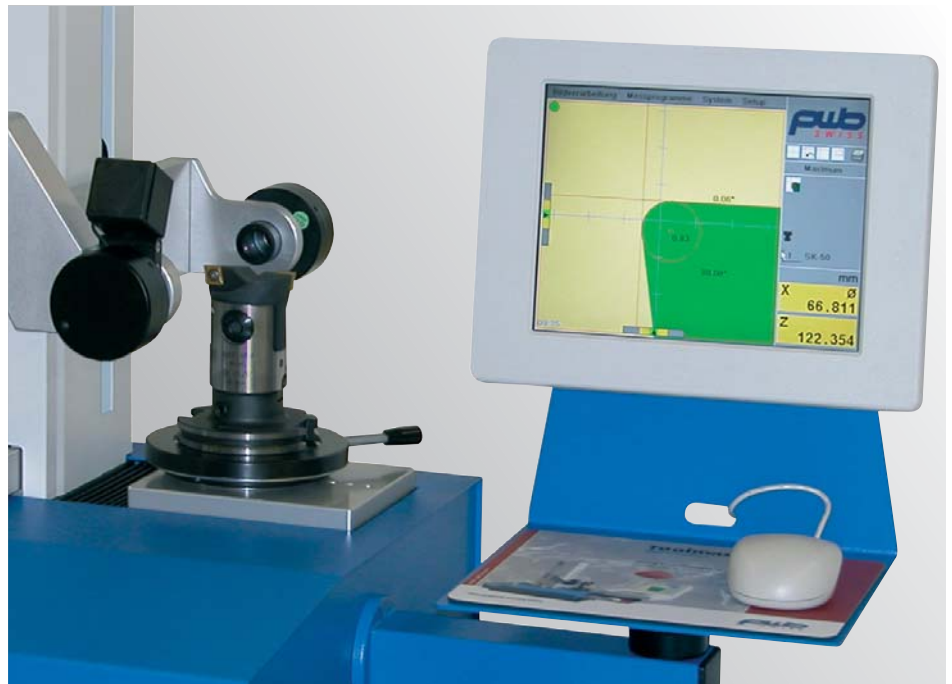
Designed as a compact, rugged bench-top unit, the Toolmaster 250 requires little space. The base plate is made of thermally stabilized cast-iron and provides maximum rigidity.

The measuring column is machined from high-tensile and stress-relieved aluminium alloy – it runs on needle bearing guides and can be traversed to the measuring point without operator fatigue.

Pre-loaded recirculating ball guides on all axes ensure a long life and lasting accuracy. Bellows protect the guides, fine adjusting spindle and measuring system from pollution in harsh workshop environments.



TM250-TCAM2 Image Processing new with 10,4" Color-screen



TM250-TCAM2 is the entry model for tool measuring with electronic image processing. It is the intelligent combination of a digital CMOS-camera and evaluation electronics with a 10.4" TFT-colour monitor.

TM250-TCAM2 can be used to align and position profile contours in X- and Z-axis as well as for manual measuring. Mouse operation makes it very easy to use. No time consuming operator training is necessary.

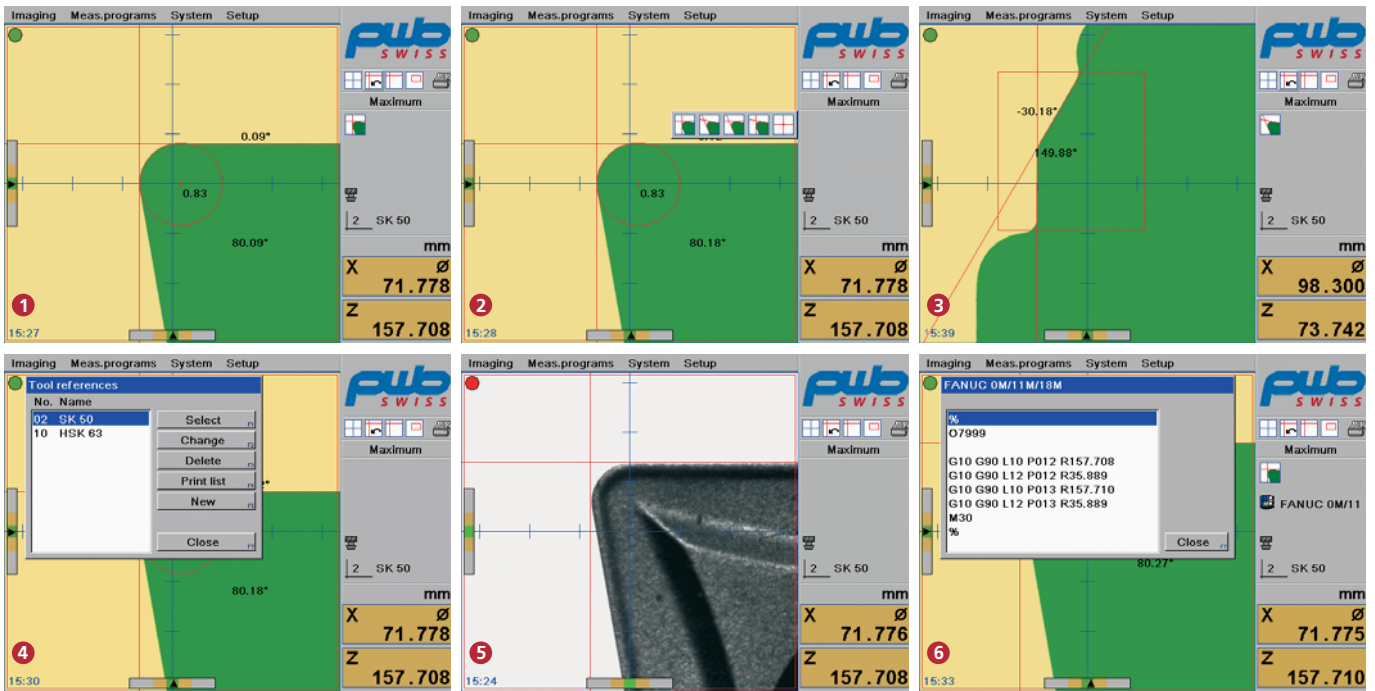
The system possesses a high degree of built-in intelligence. Its automatic contour recognition recommends the most suitable measuring method to the operator and automatically displays the measuring lines and coordinates of the tip on the monitor.

Tool tip angles and radii are automatically displayed. An alpha-numerical keypad can be displayed on the screen and used by mouse click. As an option, a standard keyboard can be connected.

RS-232 interface for program updates and the documentation of measuring results in a computer network. As an option it is possible to transfer machine tool program compatible measuring data to a CNC control via RS-232 interface.

TM250-TCAM2 provides the operator with all data required for direct tool presetting. A PC is not required.

- 1**
 - Single-handed operation
 - Ergonomic positioned operating elements
 - Pneumatic locking of axes
 - Infinite fine adjustment with micron accuracy
 - Pre-loaded linear guides, protected by bellows guarantee long life with constant accuracy
- 2** **Patented Tool Spindle**
 - Plastic cage protects tool spindle from damage
 - Runout accuracy within microns
 - Alternatively ISO40 or ISO50 taper
 - Prevents measuring errors if tool holders are not brand new (dirty or damaged)
 - Long-lasting, reliable performance
 - Adapters for all commercially available tool holders



- ① Measuring function with floating reticule
- ② Manual selection of desired measuring process
- ③ Determination of measuring window
- ④ Management of adapter zero points
- ⑤ Frontal illumination for tip inspection
- ⑥ Control compatible data output (PP) (optional)

Measuring functions:

- line/angle/radius

Display and operating features:

- Adjusting aid for both axes
- Variable evaluation area, definable by mouse click
- Switchable live image, colour or black/white (tip inspection)
- Display hardcopy via RS-232 for documentation of measuring result
- Glass scales AcuRite 0.001 mm
- Memory for 99 adapter zero points
- Memory for 500 tools, 12 digits, alpha-numerical
- Internal tool library

- Absolute, difference and incremental measurements
- Switchable radius and diameter
- Switchable mm-inch
- Hold function
- Parallelitism and linear compensation
- Password protection

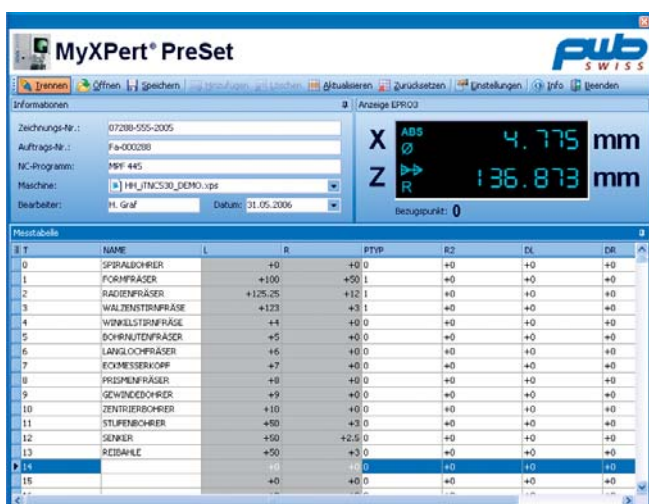
Measurement output:

- Label and tool list via USB and RS-232
- Data output for 1 machine tool (optional)

Dialogue selection:

- English/German/French/Spanish/ Italian (other languages on request)

Data-transfer with MyXPert® PreSet



With MyXPert® PreSet the presetter is connected online to a PC and can consequently be integrated into an existing company network. This enables data to be transferred directly to and from CNC machine tools in a machine compatible format (PP) via DNC link.

Principle of operation:

- The tool measuring results are stored online
- Uni-directional data transfer directly from the presetter
- Compilation of Excel files
- Can be upgraded for DNC operation with tool management and tool difference lists.

Technical Data

Designation	Measuring range	
	X-Axis (Ø)	Z-Axis (L)
Toolmaster 250-TCAM210	300 (11,8")	40-360 (1,6"-14,2")
250Z5-TCAM210	300 (11,8")	40-500 (1,6"-19,7")
250X4-TCAM210	400 (15,8")	40-360 (1,6"-14,2")
250X4Z5-TCAM210	400 (15,8")	40-500 (1,6"-19,7")

Tool adapter available for ISO 40 or ISO 50

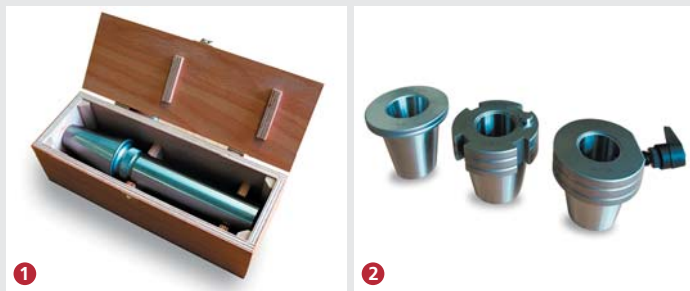
Power Supply

Electrics: 90-264 V AC / 50-60 cycles

Compressed air: 4-6 bar, pre-filtered

Accessories

All tool spindles, master mandrels and adapters are made of rust-resistant, vacuum hardened steel.



1 Master mandrel/wooden case

Master mandrels are for zero calibration and electronic error compensation of the guides (parallelism). Zero calibration is possible at any desired working height.

2 Adapter

Adapters are available for ISO/HSK/VDI and other tool systems.

We reserve the right to make technical improvements.

Contact

Other Products



Toolmaster

- with pneumatic clamping
- with motorized adjustment
- with frontal illumination measuring functions
- with double camera systems
- special executions



Toolboy

Ergonomic tool assembly without reclamping – prevents tool and spindle damage



Touchsetter

Easy determination of machine spindle reference point

pwb
SWISS

www.pwb-swiss.com